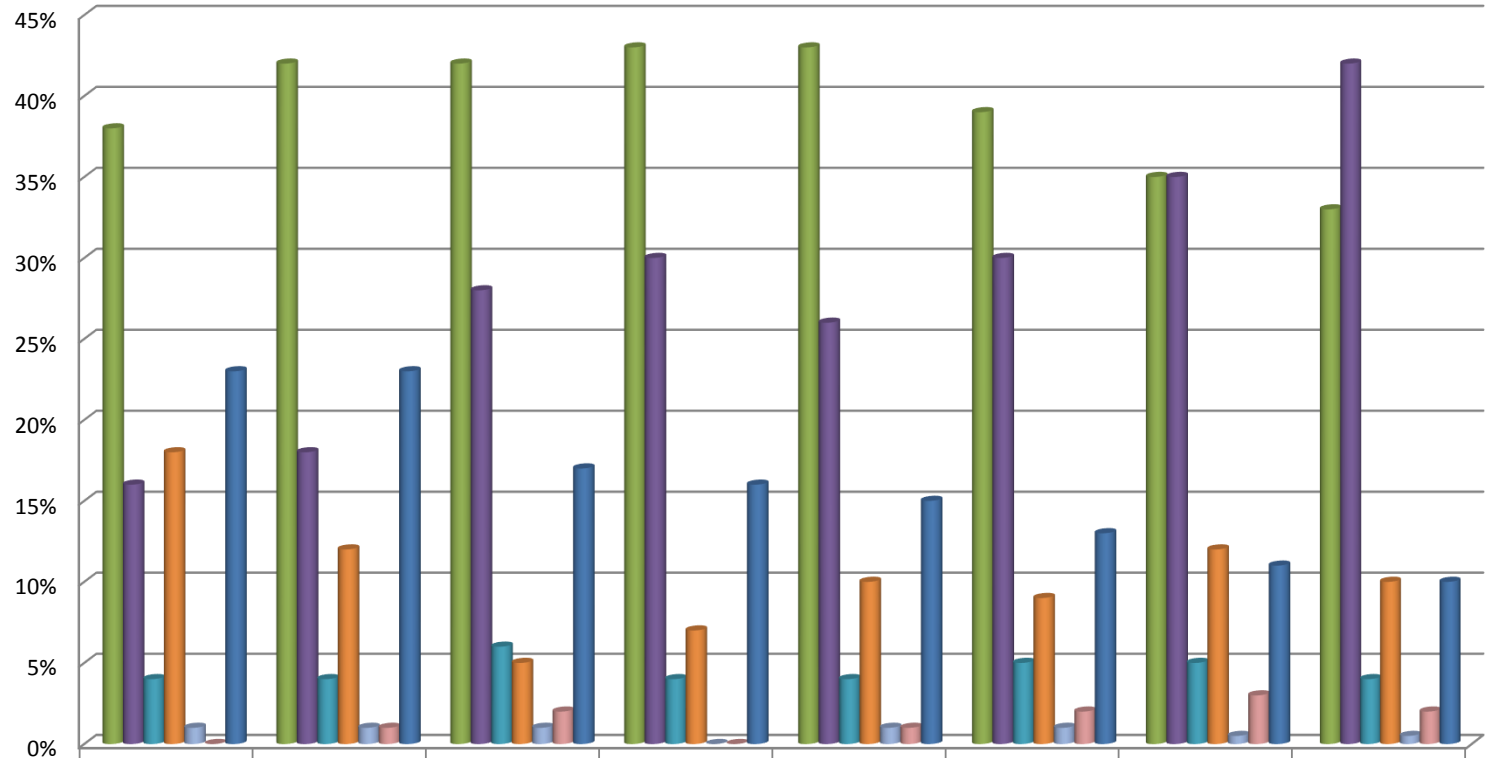




Eight-Year Post-Grad Resolution for Emory College Graduates (2009-2016)



	2009	2010	2011	2012	2013	2014	2015	2016
Continuing Education/Fellowships	38%	42%	42%	43%	43%	39%	35%	33%
Employed	16%	18%	28%	30%	26%	30%	35%	42%
Post-Grad Internship	4%	4%	6%	4%	4%	5%	5%	4%
Gap Year/Volunteer/Not Actively Seeking	18%	12%	5%	7%	10%	9%	12%	10%
Military	1%	1%	1%	0%	1%	1%	0.5%	0.5%
Return to Home Country	0%	1%	2%	0%	1%	2%	3%	2%
Currently Seeking Opportunity	23%	23%	17%	16%	15%	13%	11%	10%

Annual Average Survey Knowledge Rate: 98% of Graduating Senior Class

Annual Statistics compiled and published by Aug 1 of each year (12 weeks following Commencement)